

# TommySoftware® Direct

- Direct Entry

Editorial.

- Younger and Smarter

The Second Generation of TommySoftware® CAD/DRAW Classics.

- When the Mouse Becomes a Pen

TommySoftware® Tek Illustrator.

- Support

Direct problem solutions.

- Fast and Professional

TommySoftware® Libraries for the practice-oriented CAD Workplace.

- CAD and More

More views, more value, more precision.

- Everything's Got a Price

All our products at a glance.

- Editorial Team

## **Dear Reader,**

This is the first edition of our new magazine TommySoftware® Direct, which is going to bring you regular news from TommySoftware.

This magazine is not aimed at computer experts who are only interested in technical details and memory capacity. When it comes to graphical applications or CAD, we have a different definition of experts: people who know what they are doing and which tools they need to do it more quickly. That's exactly what TommySoftware Direct is all about.

We want to open new doors for your work. Our user interface, long praised by the computer press, opens up just like your familiar drawing environment. Pens, rulers and all your customized tools are available. You can use layers just like you do now.

Our job is to develop practical programs through a constant dialog with our users, that offer real improvements to make their work easier. If you have problems working with our software, members of our technical staff are waiting in the wings at our SupportCenter. Since they work directly with programmers during product development, they know the software inside and out and can help you with all your questions..

In this edition of TommySoftware Direct, we want to introduce a new generation of both TommySoftware CAD/DRAW programs.

As with all our products, we want this publication to serve your needs, and we want your feedback! Use the order form to let us know what you want to see in future issues.

Best wishes

Thomas Maier  
*President*

and the TommySoftware Direct team.

## Test TommySoftware® CAD/DRAW 2.0 for 30 days.



Our brand new shareware product, TommySoftware CAD/DRAW 2.0 is now available. Fulfilling your expectations of a CAD shareware product is just the beginning for us. We want to set new standards! TommySoftware has updated this Windows classic with a whole new set of drawing, construction, and illustration functions.

Try TommySoftware CAD/DRAW 2.0 for 30 days. After you discover how indispensable it is, then make sure to register to get the benefit of all our services. To register, simply print the registration form from the Help menu and send it to us. In return, you will receive the full CAD/DRAW 2.0 package.

You can find the shareware version on many BBSs, at your shareware dealer, or directly from TommySoftware. You can order the full product now, using the order form enclosed.

### Highlights:

- Complete drawing functions (lines, zigzag lines, polygons, regular polyeders, circles, circle parts, ellipses, ellipse parts, eplines, Bézier curves, freeform surfaces, freehand lines, ...)
- Numerous manipulative functions (Moving, Copying, Rotating, Scaling, Reflecting, Trimming, Rounding, Chamfering, Protecting, Releasing, Moving individual end or corner points, ...)
- Mathematical division of objects
- Semi-associative measurement and dimension lines
- Create new symbol libraries
- 256 drawing layers
- Configurable hatching
- Single and multiple line text editor using DIN/ISO compliant vector fonts
- 13 DIN/ISO page formats plus American page formats
- Support for isometric and dimetric drawing
- Free Zoom from 1 : 1.000.000.000.000
- Customizable length and angle units (metric, inch, degree, radian, ...)
- Undo function
- Use PCX bitmaps in the background
- Customizable graphic popup menu for quick command choice
- Customizable keyboard assignments
- Context sensitive Help system

### Supported File Formats:

- MPG (TommySoftware CAD/DRAW and MEGAPAINTE®)
- TVG (TommySoftware® WINCAD® Release 1)
- Windows Metafile (via the clipboard)
- DXF (AutoCAD®, AutoSketch® etc.)
- PostScript® (export only)
- HPGL (export only)

### System Requirements

- Intel 80286 or higher processor
- 2 MB RAM
- 4 MB hard disk space
- Windows 3.1 or Windows NT
- A mouse

- Graphics card supporting 640 x 480 pixels and 16 colors

**For professional use we recommend:**

- Intel 80386 or higher processor
- 4 MB RAM
- 8 MB hard disk space
- Windows 3.1 or Windows NT
- A mouse
- Graphics card supporting 1024 x 768 pixels and 256 colors

## **Short Clips From the Press**

**From Computer-Aided Engineering, 5/95:**

"Although Windows tends to be a slow environment for CAD, CAD/DRAW is faster than any of the programs we've seen so far. The program is not fast because it's simpler or a "stripped down" version of something more complex. Something is obviously different in the way it was programmed. (...) Super Windows implementation!"

## **Upgrade Service**

Make sure that you stay up-to-date on all our new Windows programs by sending in your registration card so we can send you information about new products and upgrades.

## TommySoftware CAD/DRAW Professional 2.0 with 16 comprehensive Symbol Libraries!



You have never been able to get so much professional CAD capability at such a good price!  
TommySoftware CAD/DRAW Professional 2.0 costs only US\$ 149.- including all technical symbol libraries.

There is also a demo version of TommySoftware® CAD/DRAW Professional 2.0, which you can obtain for US\$ 10 in stamps direct from TommySoftware!

As a special service, we offer registered users introductory and further training to users and their colleagues. This gives you the chance to be trained by the people who worked directly with the programmers - our technical staff.

You will learn the best tricks and get a good practical introduction to working effectively. For more information, see [Support](#).

### TommySoftware® CAD/DRAW Professional 2.0 offers you:

- 300 drawing layers
- Geometry made up of markings, lines and circles
- Comments in the drawing
- Intuitive object identification
- Numerous snapping functions (intersection, midpoint, cornerpoint, endpoint, ...)
- Complete drawing functions (lines, zigzag lines, polygons, regular polyeders, circles, circle parts, ellipses, ellipse parts, splines, Bézier curves, freeform surfaces, freehand lines, ...)
- Semi-associative measurement and dimension lines
- Surface and perimeter calculation
- Mathematical division of objects
- Custom symbol libraries with external references
- Parts lists
- 40 assorted pens with freely definable line patterns
- Customizable hatching
- Line and text editor using DIN/ISO vector fonts; editable
- Over 30 DIN/ISO page formats plus American page sizes
- Up to 4 drawing windows, each showing a different view
- 20 rotatable and distortable coordinate systems
- Separately customizable display and position grids
- Support for isometric and dimetric drawing
- Up to 100 undo levels
- 20-level zoom-undo
- Complies with all important German standards for technical drawings

### File formats supported:

- T2G (TommySoftware CAD/DRAW Professional 2)
- MPG (TommySoftware CAD/DRAW and MEGAPAINTE®)
- TVG (TommySoftware WINCAD® Release1)
- Windows Metafile (via the Clipboard)
- DXF (AutoCAD®, AutoSketch® etc.)

- PostScript® (export only)
- HPGL (export only)

### **System Requirements**

- Intel 80286 or higher processor
- 4 MB RAM
- 4 to 8 MB hard disk space
- Windows 3.1 or Windows NT
- A mouse
- Graphics card supporting 640 x 480 pixels and 16 colors

### **For professional use:**

- Intel 80386 or Intel 80486 processor
- 8 MB RAM
- 10 MB hard disk space
- Windows 3.1 or Windows NT
- A mouse
- Graphics card supporting 1024 x 768 pixels and 256 colors

### **Short Clips From the Press**

#### **From PC Today 5/94:**

"TommySoftware's CAD/DRAW Professional is a brand new commercial CAD program for Windows from the producers of the hugely successful TSCAD/DRAW. Aimed squarely at the serious professional CAD user it keeps the blindingly fast performance and modest system requirements of the original but adds a host of new features and improvements..."

## TommySoftware Tek Illustrator 3: The Ultimate Graphics Application for the Windows Office



TommySoftware Tek Illustrator is a complete shareware illustration program with all the capabilities of a high-end drawing program at a fraction of the cost. It is an ideal supplement to an office suite or other business application and enables even novice users a quick start. Anyone who wants to create technical illustrations and graphics quickly and precisely will come to value its rich assortment of features.

Tek Illustrator is the ideal program to create graphics for a presentation or for making a draft of a technical drawing. Graphics designers will like Tek Illustrator's speed and simplicity. Draftsmen will recognize the value of its very powerful drawing and manipulative functions. Anyone who has to do drawings now and then will notice above all how easy it is to use.

Extensive on-line help offers detailed explanations and graphics for each individual command. It displays the table of contents and the text in two separate on-screen windows so that you can spring from clicking the mouse in the contents window to the detailed description. To help orientation, the program shows the current drawing coordinates in a status window.

In addition, Tek Illustrator Version 3 contains a wide choice of geometric functions such as Bézier curves to accomplish simple and complex constructions. It draws precisely to the 15th decimal place and has a multi-level Undo function and a variable zoom for precision work. It also offers 40 pens with definable line patterns, 300 drawing layers, more than 30 commonly used page sizes and can display up to four views of the drawing at the same time in different windows. Support for TrueType and a powerful library management function are also included. It supports CalComp drawing tablets to let you enter raw data or amend existing drawings. You can save files in several formats including DXF, BMP, WMF, HPGL, PostScript as well as TommySoftware's T3G.

Tek Illustrator Version 3 complies with the guidelines of the Association of Shareware Professionals and is available as Shareware from many BBSs and on-line services including America Online (Keyword: TommySoftware), CompuServe ([GO TOSOENG](#) or [GO TOSOGER](#)), Prodigy and on Internet.

You can also obtain the shareware version by sending US\$10 in stamps to TommySoftware, New York. The registration fee of US\$129 includes an online tutorial, the latest version of the software on CD-ROM, a complete context-sensitive help system, and additional file converters.

### System Requirements

- Intel 80386 or higher processor
- 4 MB RAM (8 MB recommended)
- 8 to 14 MB hard disk space
- Windows 3.1 or Windows NT
- CD-ROM drive
- A mouse
- Graphics card supporting 640 x 480 pixels and 16 colors

## CompuServe



TommySoftware offers two sections in CompuServe forums where you can put questions to our programmers. For questions in English, use our section in the "CADD/CAM/CAE Vendor Forum" ([GO TOSOENG](#)), for questions in German, use our section in the "PC Industrie Forum" ([GO TOSOGGER](#)). Both forums have message areas and libraries. In addition, these forums are a good place to get previews of new versions and add-ons.

If you cannot use these forums directly, you can send an email message to CompuServe ID 100273,1143 (from the Internet, the address is [100273.1143@compuserve.com](mailto:100273.1143@compuserve.com)).

If you are not already a CompuServe member, you can get information and open an account from your local CompuServe office. In the USA, call toll-free 1-800-848-8990 [or 1-614-457-8650]. In Germany call toll-free (0130) 864643 [or (089) 6653 5222]. In the United Kingdom call toll free (0800) 289458 [or (01272) 760680]. Outside these countries, call the office nearest you, or look for the ads in computer magazines. Make sure that you receive CompuServe Information-Manager for Windows ("WINCIM") 1.3.1 or higher.

## Intensive Training



We offer intensive training courses in all TommySoftware graphics and CAD applications for beginners and advanced users.

TommySoftware's technical staff, who are involved with program development, can show you (and your coworkers) everything you need to know at your own premises. Call us for more information.



## Libraries



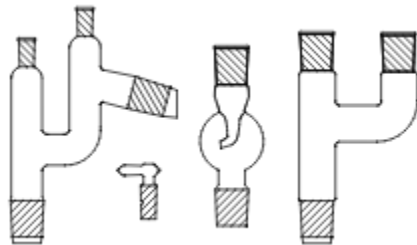
To make using TommySoftware programs even more effective, we offer a large number of comprehensive symbol libraries. You can paste individual elements from the library onto the clipboard and use them directly in your drawings. This saves a great deal of time and effort, a feature highly valued by experts.

Libraries are available for the following areas. They can be used in any TommySoftware® program:

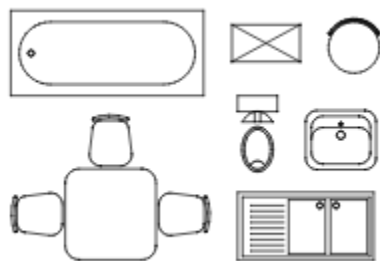
- Electrical engineering
- Electronics
- Electrical installation
- Environmental technology
- Steel profiles
- Process engineering
- Valves
- Heating and ventilation
- Landscaping
- Pneumatics
- Laboratory equipment
- Hydraulics
- Interior design

Here are examples from some of the libraries:

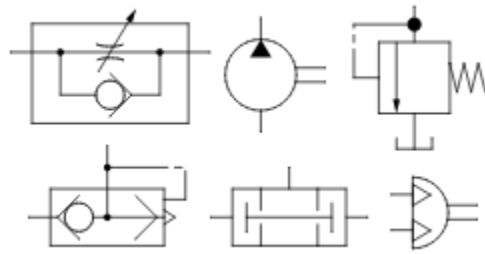
*Chemical laboratory equipment:*



*Interior design:*



*Hydraulics and pneumatics:*

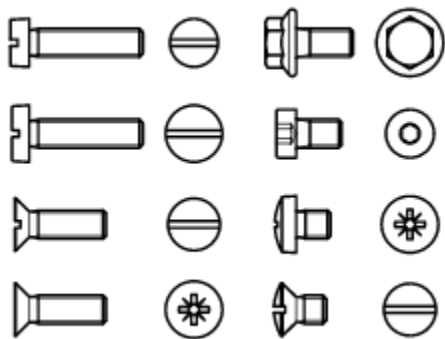


In addition we offer extra, especially comprehensive libraries for TommySoftwareTek Illustrator covering the following areas:

- Screws
- Nuts
- Steel profiles

Examples:

*Screws:*



*Profiles:*



A complete overview of the contents of all available libraries can be found in our library catalog in the file CATALOG.HLP, included with all full versions. In general, it can be reached after installation by double-clicking on the icon labeled "Libraries".

## More Comfort

You can obtain CalComp DrawingBoard III digitizers for use with TommySoftware Tek Illustrator directly from TommySoftware. They make the professional use of TommySoftware applications easier, quicker and precisely controllable. You can decide which type of graphics tablet is right for you by answering the following questions.

Which input device? To trace templates, you need an input device for your digitizer called a puck. If you prefer to work freely, choose a 3-button-stylus.

Which size? For use with TommySoftware applications, 305 x 305 mm (12 x 12 inch) and 305 x 457 mm (12 x 18 inch) digitizers are ideal. Smaller digitizers may be suitable, but they offer hardly any space for command fields.

Which brand? TommySoftware applications can be used with any digitizer which has a driver for Windows 3.1. TommySoftware recommends particularly the use of CalComp digitizers as they have a particularly good driver (Windows Tablet Manager). In addition they have especially good functions for replacing the mouse, choosing commands and tracing templates.

**Note:** TommySoftware does not sell those drawingboards directly. However we will supply you with the address of the closest dealer near you (free of charge)

### Art#

<b>34000-Series</b>	<b>Working area mm</b>	<b>Accuracy mm</b>
34120	305 x 305	0,254
34180	305 x 457	0,254
34240	457 x 610	0,254
34360	610 x 914	0,203
34480	914 x 1219	0,203
34600	1118 x 1524	0,203

Note: All tablets include electronics, overlays (only 34120, 34180, 34240), an optional pointing device and a driver kit.

### Pointing devices

<b>without cables</b>	<b>Description</b>
T 222	2-button stylus, standard version
T 226	2-Button stylus, Lite-Touch version
T 224	Pressure sensitive 2-button stylus
T 211	4-button puck, linear
T 213	4-button puck, Diamond
T 212	16-button puck

### Pointing devices

<b>with cable</b>	<b>Description</b>
T 121	1-Button stylus
T 111	4-Button puck, linear
T 113	4-Button puck, Diamond
T 112	16-Button puck

each further pointing device, with or without cable

**Driver Kits**      **incl. driver, handbook, connecting cable**

I 112                    PC/DOS serial version  
I 132                    Sun-Unix-X-Windows version

## **More Precision**

We have precise fonts from the world's largest type vendor. Exclusive to TommySoftware are the precise ISO-standard TrueType fonts from Fontshop especially for use with TommySoftware Tek Illustrator. The font collection costs just US\$ 79.95.

## **More Value**

Worthwhile: site licenses and educational versions. If you have multiple workstations, you can buy TommySoftware programs with complete disk sets and additional manuals at special prices. Call for details or make a note on your order that you want a site license and we'll do the rest. You can make substantial savings with site licenses: up to US\$ 200.- per copy.

## **TommySoftware Demo Versions**

Do you want to try our software before you buy it? Simply send us US\$ 10 in stamps with details of which application you are interested in. The demo versions have the full functionality of the full versions except for saving and printing (for space reasons, we cannot include libraries with the demo versions). There are no demo versions of our shareware programs. Why? Because you order them for US\$ 10 in stamps and try them out for 30 days. Our shareware products are fully functioning and not crippled.

## **Upgrade Service**

To stay up-to-date with our Windows programs, please make sure that you return your registration card. As a registered user, you will be informed first about new products and improvements.

### **Note:**

Only registered users can take advantage of our upgrade offers and support!

### **Inquiries:**

If you still have questions about our products, call us at our New York Headquarters: from Monday to Thursday between 10am and 1 pm and 2pm to 5pm, phone + 1 212 807 9720, fax 1 212 807 8149.

### **Problems?**

If you have the impression that your software is not working properly, please contact our [Support Center](#). They can help in case of difficulty. If there are further problems please contact our Customer Service Manager in New York, phone + 1 212 807 9720.

Prices for the U.S.A. (prices for other countries may vary):

<b>Product</b>	<b>Price in US\$</b>	<b>TYPE</b>
<b>TommySoftware® CAD/DRAW 2 for Windows</b>		
TommySoftware® CAD/DRAW 2	59.95	VP
TommySoftware® CAD/DRAW 2 Upgrade from TommySoftware® CAD/DRAW 1.x	29.95	UP
TommySoftware® CAD/DRAW 2 "1+9"	299.00	1+9 *
TommySoftware® CAD/DRAW 2 Library	29.95	VP
<b>TommySoftware® CAD/DRAW Professional for Windows</b>		
TommySoftware® CAD/DRAW Professional	149.00	VP
TommySoftware® CAD/DRAW Professional Upgrade from TommySoftware® CAD/DRAW 1 or 2	99.00	UP
TommySoftware® CAD/DRAW Professional "1+9"	349.00	1+9 *
<b>TommySoftware® Tek Illustrator 3</b>		
TommySoftware® Tek Illustrator 3 (CD-ROM)	129.00	VP
TommySoftware® Tek Illustrator 3 educational version (CD-ROM)	116.10	EDU *
TommySoftware® Tek Illustrator 3 "1+9" (CD-ROM)	349.00	1+9 *
<b>Add-Ons for Tek Illustrator</b>		
TommySoftware® Profile Library 1: Screws	79.95	
TommySoftware® Profile Library 2: Nuts	79.95	
TommySoftware® Profile Library 3: Profiles	79.95	
FF-ISO-standard Truetype font	59.95	

Valid from January 1995. All prices excluding tax. NY residents: please add appropriate sales tax.

The price includes the correct number of handbooks and disk sets.

Unless otherwise shown, software is supplied on 3.5" disks. For an extra charge, software normally supplied on CD-ROM can be obtained on 3.5" disks.

The prices shown are suggested retail prices. No liability for errors and alterations.

**Symbols:**

- \* Include proof of status when ordering (student ID, student registration or similar)
- 1+9 1 full version and 9 educational licenses
- VP full product
- UP upgrade
- EDU educational license

**Publisher:**

- Thomas Maier

**Coordination:**

- Olaf Reiswig
- Uta Glaubitz

**Editorial:**

- Olaf Reiswig
- Uta Glaubitz
- Susanne Berstorff

**Layout:**

- Stefan Malz

**Technical Assistance:**

- Djordjija Trimceski

**Freelance Contributors:**

- Olaf Kassner
- Timo Bierbaum
- Mallory Chastagnier
- Brain R. Johnson
- Lynne Marcus

**Liability:**

Although we take every possible care, we cannot take any liability for the accuracy of any part of this publication. MEGAPAIN<sup>®</sup> is a registered trademark of TommySoftware<sup>®</sup>. AutoCAD<sup>®</sup> is a registered trademark of Autodesk. All brand names are trademarks or registered trademarks of their respective owners. E & OE.

TommySoftware Direct is published by TommySoftware, North America, Inc., New York.

The logo for TommySoftware, featuring the word "TOMMY" in a stylized, blue, handwritten font, followed by "SOFTWARE" in a blue, sans-serif font, and a registered trademark symbol (®) to the right.**North America, Inc.**

130 Barrow Street  
New York, NY 10014  
U. S. A.

Phone (212) 807-9720  
Fax (212) 807-8149  
CompuServe 100020,3647  
America Online "TSNA"  
Prodigy "JULE73A"

